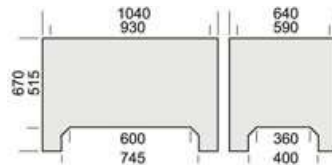


Pallet Box 1425B

Product Overview

Industrial Pallet Box - 1040x640x670

VAT and Delivery
Not Included



Options:

Skids / Feet	Feet 2 Skids
Wheel Type	Nylon corner to corner Rubber corner to corner Rubber Diamond Nylon Diamond
Configuration	Corner to corner Diamond
Braked Castors	1, 2, 3, 4

Z/CAPC/1425B4

Specification	
Base Size	1040 x 640mm
Pallet box Capacity	285 litres
Pallet box Load Capacity	200kg
Type	Full Sided
External Dimensions (with feet)	1040 x 640 x 670mm
Internal Dimensions	930 x 590 x 515mm
Weight - 4 Feet version	13.7kg
Static Load Capacity	1800kg
Stackable Quantity High	9 high

- Plastic box pallets have a varied number of uses and can be found in all industries including food, medical through to automotive. The box pallets are suitable for food and are fully recyclable.
- The pallet boxes are a standard pallet base size and have the option for feet, skids, or wheels to be fitted underneath. The pallet skids are recessed on the edges to sit inside the top lip to give a positive and safe stacking.
- The plastic pallet box is made with a double-skinned structure, reinforcing corner and central side columns, and reinforcement ribs in the base structure, all of which substantially improve resistance to compression loads. The pallet box is suitable for use with heavy loads during transport, storage of bulk and packaged products or liquids.
- The plastic pallet boxes are constructed from High Density Polyethylene (PE-HD). As a result, the pallet box has excellent resistance to shocks, stacking, and temperature extremes. They are suitable for forklifts and any type of tipping devices.

Pallet Box 1425B

Product Overview

Optional Pallet Box Lid

The optional lid can be a useful addition to a pallet box. It offers the option to store boxes outside and helps to reduce cross-contamination where necessary.

Specification	
Internal Dimensions	1200 x 800mm
External Dimensions	1215 x 815mm
A	70mm
B	25mm
D	35mm
E	835mm
F	190mm
G	175mm
K	165mm
M	550mm
N	135mm
Q	170mm
R	165mm
S	855mm
Weight	6.8kg
Height increase when stacked with other lids	35mm
Height increase when stacked with other pallet box	35mm

Additional Options for the Pallet Box

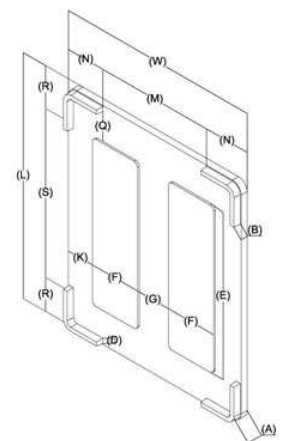
Range of Colours Available

Optional Tap Fittings

Adhesive Card Holder

Embossed Marking

Screen Hot Print Marking



*There is a minimum quantity of 200 boxes for a coloured box.